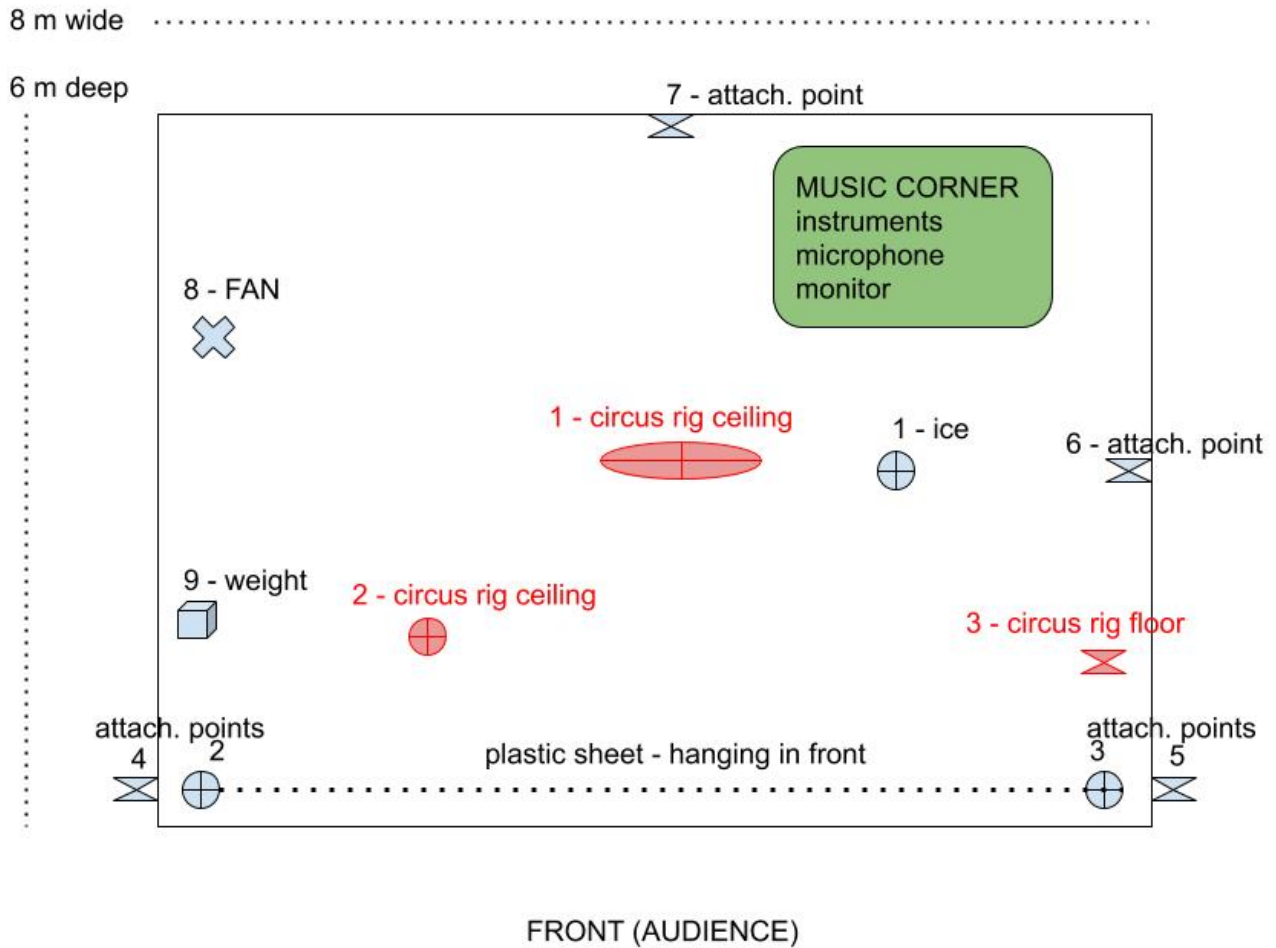


PLAST TECHNICAL RIDER

1. OVERVIEW
2. STAGE
3. RIGGING OF CIRCUS EQUIPMENT
4. RIGGING OF PROPS / OBJECTS
5. TECH-RIDER - LIGHT
6. TECH-RIDER - SOUND
7. IMPORTANT INFO / Other necessities
8. ACCOMMODATION & FOOD



1. STAGE OVERVIEW



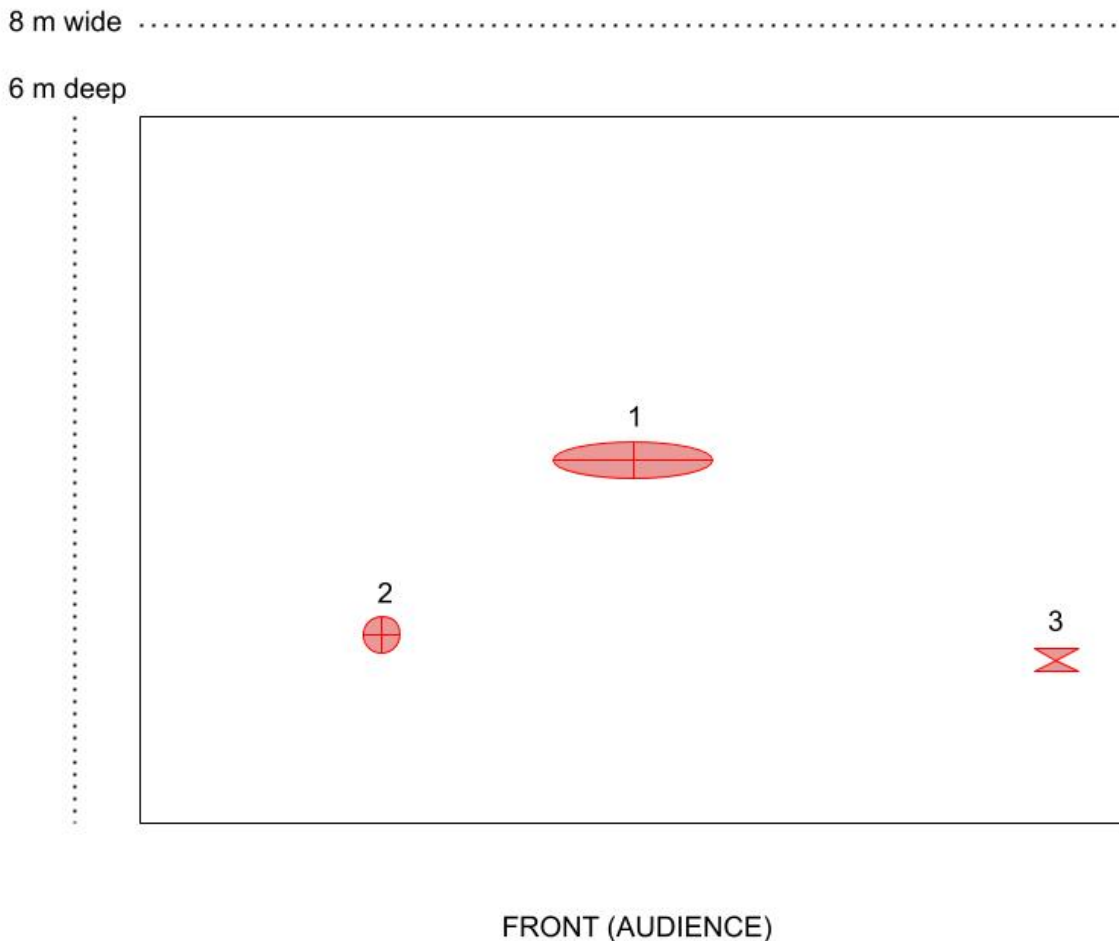
Size: 8 meters wide, 6 meters deep, 7 meters (can be adjusted to other stage size)

Floor: Flat and dry surface, covered by black dance carpet or similar.

We drop ice on it, so floor must be water and shock resilient.

(3x1,5kg pieces of ice from approximately 6 meters height.)

2. RIGGING OF CIRCUS EQUIPMENT



1. Rigging points ceiling - at 7 meters height - 1000kg

This is the point from the ceiling on the middle of the stage. Several props and slings are rigged from this point. The best is to have a long wide point, such as a bar or a truss beam.

Capacity to take 1000kg. Can also be several points if no beam is available.

Important that the point is stable in all directions at this height, because of circular movements in the rope that are rigged from it.

Rigging point needs to be brought down to app. 7 m, then rigged and stabilised to the sides. Or other solution for stabilising for horizontal movements.

2. Rigging point ceiling 2 - at 7 meters height - 1000kg

This is the point from the ceiling in the front side of the stage. Exact location is a bit flexible.

Does not need to be fixed in all directions at this height.

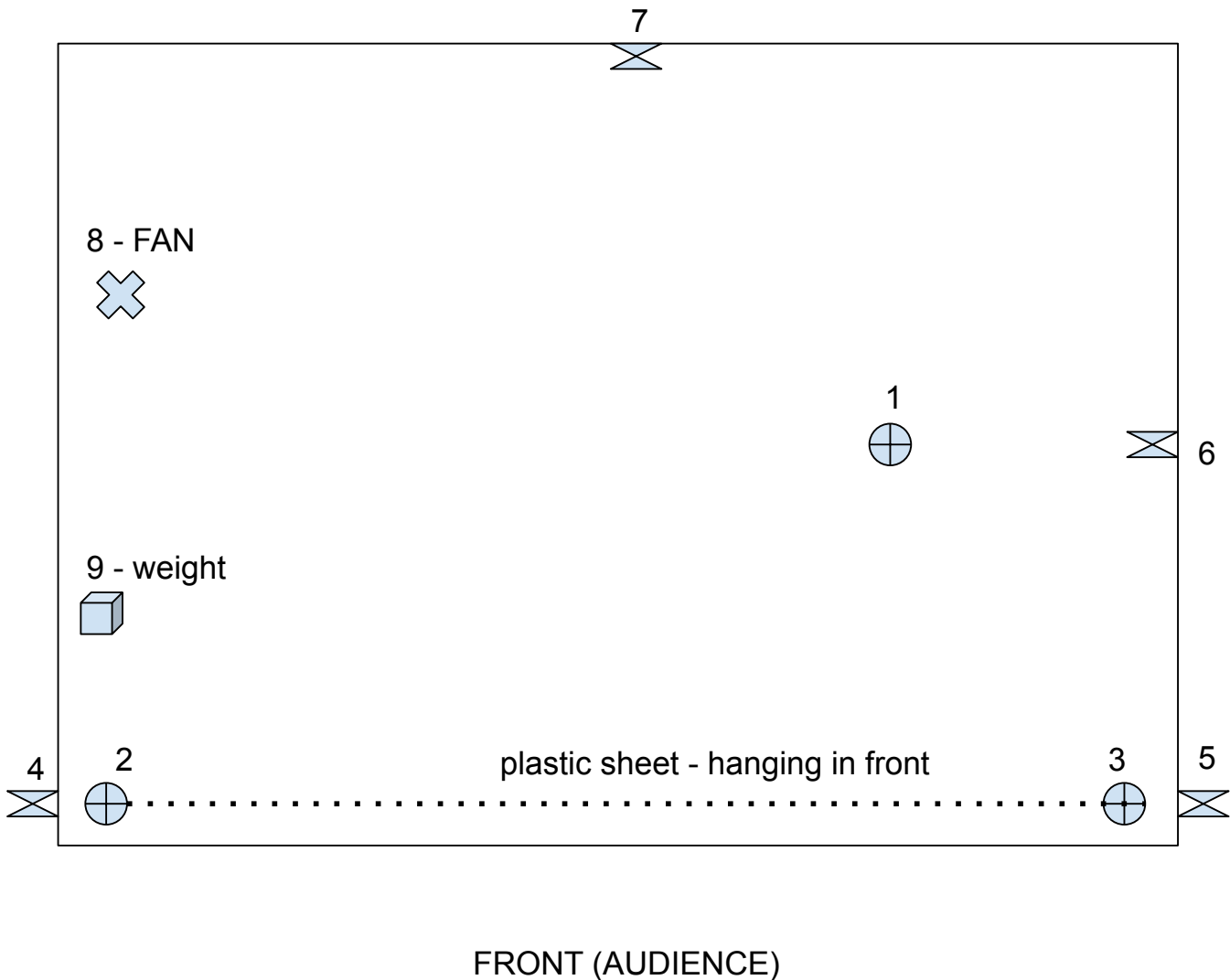
Capacity to take 1000kg. One rope will be rigged from this point.

3. Rig point floor

Needs to be in floor or reachable from floor. This point can be moved either in the front of stage or in middle of stage. This point needs to have a breaking point of approximately minimum 250kg.

Circus disciplines on stage: Rope, Hair hanging, Rigging

3. RIGGING OF PROPS / OBJECTS



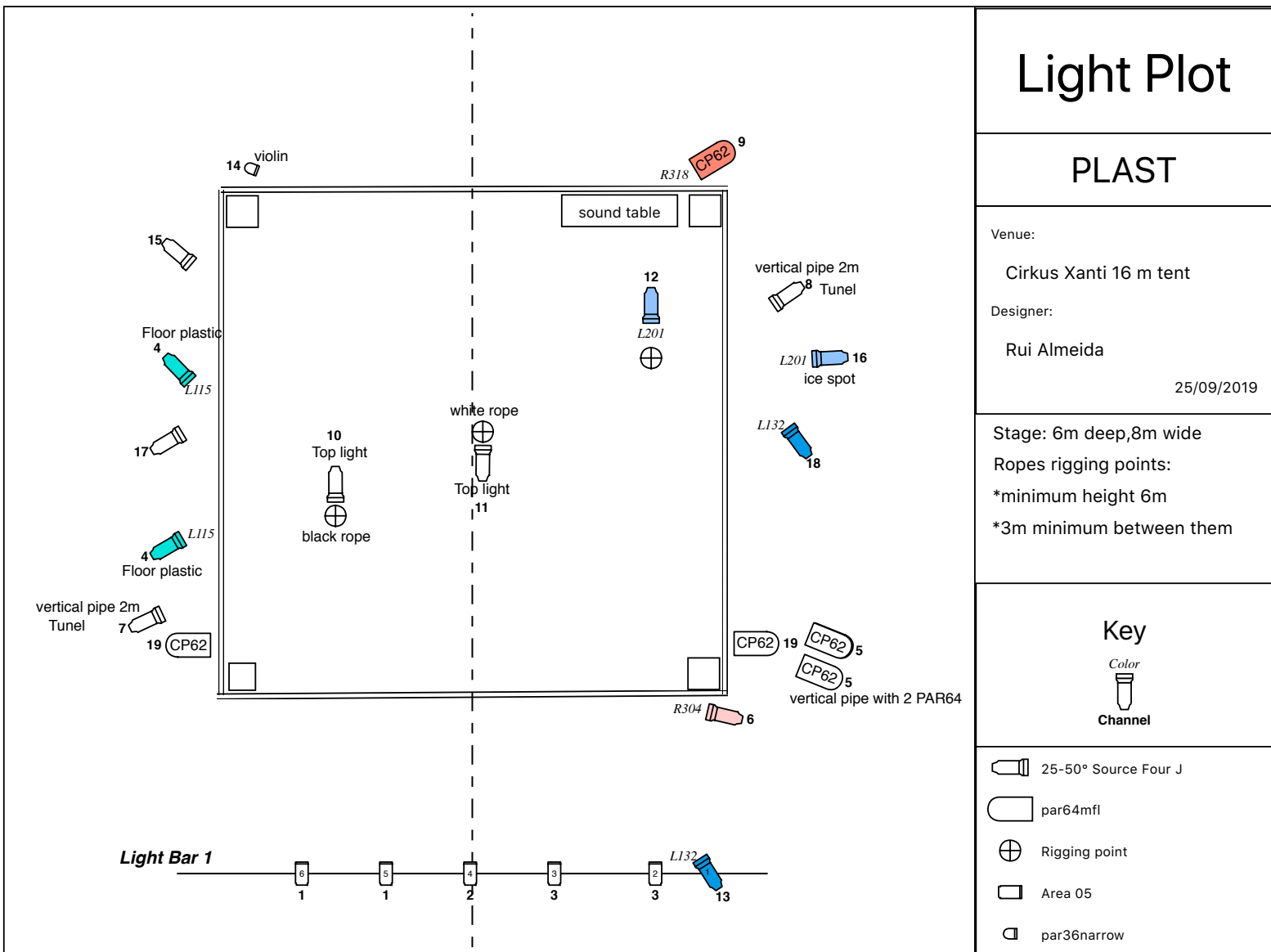
1. Point for hanging ice. The point is from ceiling at approximately 7 meters. Will not take much force, approx 10kg in maximum.
- 2-3. Rigging points for attachment of plastic sheet. The points are from ceiling at approximately 7 meters. Will not take much force, approx 10kg in maximum.
- 4-5. Attachment points on floor for ropes attached to the plastic sheet. Will not take much force, approx 10kg in maximum.
6. Attachment point on floor for ropes attached to the hanging ice. Will not take much force, approx 10kg in maximum.
7. Attachment points on floor for ropes attached to the plastic sheet. Will not take much force, approx 10kg in maximum.
8. Fan will be placed here. Needs electric socket 220v
9. A weight to weigh down a corner of the plastic sheet. Preferably a sandbag of around 5-10kg

2. TECH-RIDER - LIGHT #1

We come with our own technician.
Or we need one extra day of light rehearsal.

OBSERVE THERE ARE TWO LIGHT PLOTS ATTACHED,
one for circus tent, and one for theatre stage

Circus Tent

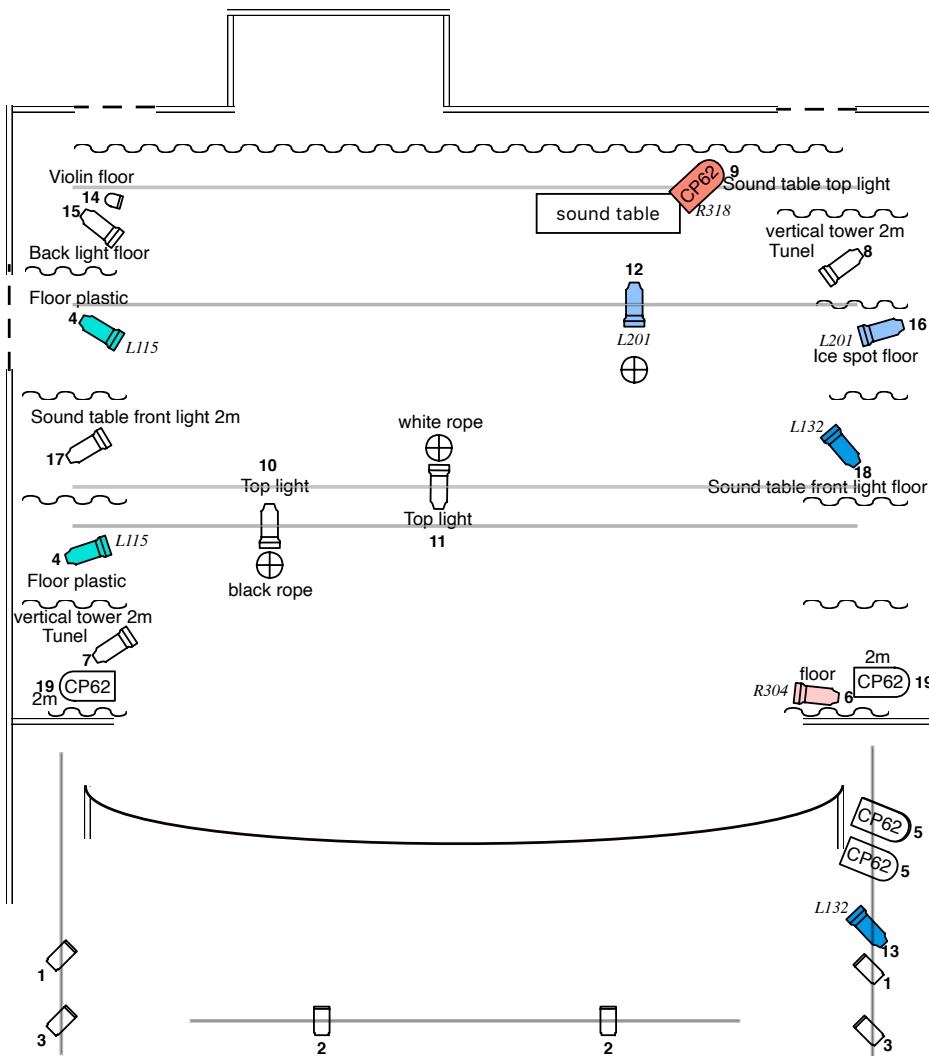


TECH-RIDER - LIGHT #2

We come with our own technician.
Or we need one extra day of light rehearsal.

OBSERVE THERE ARE TWO LIGHT PLOTS ATTACHED,
one for circus tent, and one for theatre stage

Theatre Stage



Light Plot

PLAST

Venue:

Sundsvall theater

Designer:

Rui Almeida

04/12/2019

Stage: 6m deep, 8m wide

Ropes rigging points:

*minimum height 6m

*3m minimum between them

Key

Color



Channel

13 25-50° ETC Source Four 750w

5 Par64mfl 1000w

3 Rigging point

6 Fresnel 1200w

1 Pin spot 20 Dimmer channels

3. TECH RIDER SOUND

3.1 Overview

1. Introduction - please read, both technician and producer/contact at venue
2. Channel list
3. Channel list with extra information
4. What we bring
5. What should be provided
6. Instructions for mix and performance outline

Introduction:

The performance is both a live-concert and a circus performance. To be able to do the performance well we are in need of a high quality sound system and a sound technician experienced in music concerts.

3.2 CHANNEL LIST

1. VOICE
- 2-3. COMPUTER - SYNTH - right & left
4. COMPUTER - DRUM - mono
- 5-6. VIOLIN - right & left - from effect chain
7. VIOLIN - "natural sound"

3.3 CHANNEL LIST - with extra information

1. VOICE - I bring a SMbeta58 - it needs extra effects
- 2-3. COMPUTER - SYNTH - right & left - can be in need of extra reverb, and limiter
4. COMPUTER - DRUM
- 5-6. VIOLIN - right & left - effect channel from contact microphone
7. VIOLIN - "natural sound" from Condenser Clip Microphone mounted on violin - might need some extra reverb

3.4 We bring:

All instruments and microphones

3.5 Venue provides

High quality sound system appropriate for the stage
 DI-boxes
 monitors on stage,
 1 microphone stand

3.6 Instructions for mix and performance outline

Only available in Swedish, will be translated, contact us if needed.

7. IMPORTANT INFO / Other necessities

Freezer. Normal small house freezer
Needs space for 6 boxes of 17x17 cm

Schedule:

1 day rigging if our light technician is with us
2 day rigging if local light technician

Sound rigging and soundcheck with sound technician approx 3 hours the day before performing day

1 hour soundcheck the same day. 2 hours before performance

8. Accommodation & Food

1 double room for Karoline Aamås and Love Kjellsson
1 single room for Hege Eriksdatter Østefjells
1 single room for light technician

One diet of gluten free, vegan food
One diet of vegan food
One vegetarian diet according to the Low Fodmap diet